



Government of India  
Ministry of Earth Sciences



India Meteorological Department

### PRESS RELEASE-3

Time of issue: 1300 hours IST

Dated: 3<sup>rd</sup> December, 2023

**Sub: Cyclonic Storm “MICHAUNG” (pronounced as MIGJAUM) over Southwest Bay of Bengal (Cyclone Warning for Andhra Pradesh and adjoining North Tamil Nadu-Puducherry Coasts: **Orange Message**)**

Yesterday’s Deep Depression over Southwest Bay of Bengal moved northwestwards and intensified into a Cyclonic Storm “MICHAUNG” (pronounced as MIGJAUM) in the early morning (0530 hours IST) of today, the 3<sup>rd</sup> December, 2023. Continuing to move further northwestwards, it lay centered at 0830 hours IST of today, the 3<sup>rd</sup> December, 2023 over the same region near Latitude 11.5°N and Longitude 82.4°E, about 290 km east-southeast of Puducherry, 290 km southeast of Chennai, 420 km southeast of Nellore, 530 km south-southeast of Bapatla and 530 km south-southeast of Machilipatnam.

It is likely to continue to move northwestwards, intensify further and reach Westcentral Bay Of Bengal off south Andhra Pradesh and adjoining north Tamilnadu coasts by 4<sup>th</sup> December forenoon. Thereafter, it would move nearly northwards almost parallel and close to south Andhra Pradesh coast and cross South Andhra Pradesh coast between Nellore and Machilipatnam during forenoon of 5<sup>th</sup> December as a **Severe Cyclonic Storm** with a maximum sustained wind speed of 90-100 kmph gusting to 110 kmph.

#### Track and Intensity Forecasts:

Date/Time (IST)	Position (Lat. °N/ long. °E)	Maximum sustained surface wind speed (Kmph)	Category of cyclonic disturbance
03.12.23/0830	11.5/82.4	60-70 kmph gusting to 80 kmph	Cyclonic Storm
03.12.23/1130	11.8/82.1	65-75 kmph gusting to 85 kmph	Cyclonic Storm
03.12.23/1730	12.2/81.7	70-80 kmph gusting to 90 kmph	Cyclonic Storm
03.12.23/2330	12.6/81.4	75-85 kmph gusting to 95 kmph	Cyclonic Storm
04.12.23/0530	13.1/81.0	80-90 kmph gusting to 100 kmph	Cyclonic Storm
04.12.23/1730	14.1/80.5	85-95 kmph gusting to 105 kmph	Severe Cyclonic Storm
05.12.23/0530	15.3/80.3	90-100 kmph gusting to 110 kmph	Severe Cyclonic Storm
05.12.23/1730	16.3/80.7	65-75 kmph gusting to 85 kmph	Cyclonic Storm
06.12.23/0530	17.2/81.7	45-55 kmph gusting to 65 kmph	Depression
06.12.23/1730	18.5/83.2	25-35 kmph gusting to 45 kmph	Well Low Pressure Area

Contact: Cyclone Warning Division, Office of the Director General of Meteorology, India Meteorological Department, Ministry of Earth Sciences.

Phone:(91) 11-24652484, FAX: (91) 11-24643128, 24623220, E-mail:cwdhq2008@gmail.com, Website:

[rsmcnewdelhi.imd.gov.in](http://rsmcnewdelhi.imd.gov.in)

Spatial rainfall distribution: Isolated: <25%, A few: 26-50%, Many: 51-75%, Most: 76-100%

Rainfall amount (mm): Heavy rain: 64.5 – 115.5, Very heavy rain: 115.6 – 204.4, Extremely heavy rain: 204.5 or more.

## Warnings:

### (i) Rainfall Warning (graphics enclosed):

- **North Coastal Tamil Nadu & Puducherry:** Light to moderate rainfall at most places with heavy to very heavy rainfall at a few places with isolated extremely heavy falls is very likely on 3<sup>rd</sup> & 4<sup>th</sup> and isolated heavy rainfall on 5<sup>th</sup> December and decrease thereafter.
- **Coastal Andhra Pradesh:** Light to moderate rainfall at most places with heavy to very heavy rainfall at a few places with extremely heavy falls at isolated places over south coastal Andhra Pradesh on 3<sup>rd</sup> and heavy to very heavy rainfall at a few places with extremely heavy falls at isolated places over coastal Andhra Pradesh & Yanam on 4<sup>th</sup> & 5<sup>th</sup> December. Isolated heavy rainfall is likely over north coastal Andhra Pradesh on 6<sup>th</sup> December.
- **Rayalaseema:** Light to moderate rainfall at many places with isolated heavy to extremely heavy falls is very likely on 3<sup>rd</sup> & 4<sup>th</sup> and isolated heavy rainfall on 5<sup>th</sup> December and decrease thereafter.
- **Telangana:** Light to moderate rainfall at few places with **isolated heavy rainfall** is likely on 4<sup>th</sup> & 5<sup>th</sup> with **isolated very heavy rainfall** over the same region on 5<sup>th</sup> December.
- **Odisha:** Light to moderate rainfall at most places with **isolated heavy rainfall** is likely over south Coastal and adjoining south Interior Odisha during 4<sup>th</sup> & 6<sup>th</sup> with **isolated very heavy rainfall** over the same region on 5<sup>th</sup> December.

### (ii) Wind warning:

- **Southwest Bay of Bengal along & off north Tamil Nadu-Puducherry Coasts:**  
**Gale wind** speed reaching **60-70 kmph gusting to 80 kmph** is prevailing over Southwest Bay of Bengal. It is likely to gradually increase becoming **70-80 kmph gusting to 90 kmph** from 3<sup>rd</sup> December evening for subsequent 12 hours. It will gradually decrease thereafter.
- **Westcentral Bay of Bengal and along & off south Andhra Pradesh Coast:**  
**Squally wind** speed reaching **50-60 kmph gusting to 70 kmph** is prevailing over westcentral Bay of Bengal. It is likely to gradually increase becoming **Gale Wind** speed reaching **70-80 kmph gusting to 90 kmph** from 3<sup>rd</sup> evening; **80-90 kmph gusting to 100 kmph** from 4<sup>th</sup> morning and **90-100 kmph gusting to 110 kmph** from 4<sup>th</sup> evening to 5<sup>th</sup> December noon. It would gradually decrease thereafter.
- **Along & off north Andhra Pradesh Coast:**  
**Squally wind** speed reaching **45-55 kmph gusting to 65 kmph** likely from 4<sup>th</sup> December evening, likely to gradually increase becoming **55-65 kmph gusting to 75 kmph** from 5<sup>th</sup> December morning for subsequent 24 hours. It would gradually decrease thereafter.
- **Along & off Odisha Coast:**  
**Squally wind** speed reaching **35-45 kmph gusting to 55 kmph** likely from 4<sup>th</sup> December evening, likely to gradually increase becoming **40-50 kmph gusting to 60 kmph** from 5<sup>th</sup> December evening for subsequent 12 hours. It would gradually decrease thereafter.

---

Contact: Cyclone Warning Division, Office of the Director General of Meteorology,  
India Meteorological Department, Ministry of Earth Sciences.

Phone:(91) 11-24652484, FAX: (91) 11-24643128, 24623220, E-mail:cwdhq2008@gmail.com, Website:

[rsmcnewdelhi.imd.gov.in](http://rsmcnewdelhi.imd.gov.in)

Spatial rainfall distribution: Isolated: <25%, A few: 26-50%, Many: 51-75%, Most: 76-100%

Rainfall amount (mm): Heavy rain: 64.5 – 115.5, Very heavy rain: 115.6 – 204.4, Extremely heavy rain: 204.5 or more.

**(iii) Sea Condition:**

• **Southwest Bay of Bengal and along & off north Tamil Nadu-Puducherry Coasts:**

**Very Rough to high sea condition** is prevailing and likely to continue till 4<sup>th</sup> December morning and likely to become rough to very rough thereafter till 5<sup>th</sup> December morning. It is likely to improve thereafter gradually.

• **Westcentral Bay of Bengal and along & off south Andhra Pradesh Coast:**

**Rough to Very Rough sea condition** is prevailing over the region. It is likely to become **very rough to high** from 3<sup>rd</sup> December evening till 4<sup>th</sup> December and become high to very high phenomenal seas from 4<sup>th</sup> evening to 5<sup>th</sup> December noon. It is likely to improve thereafter gradually becoming high to very rough from 5<sup>th</sup> evening and very rough to rough from 6<sup>th</sup> morning for next 12 hours.

• **Along & off North Andhra Pradesh Coast:**

**Rough to Very Rough to sea condition** is likely from 4<sup>th</sup> December, very rough to high on 5<sup>th</sup> and very rough to rough on 6<sup>th</sup> December.

• **Along & off Odisha Coast:**

**Rough to Very Rough to sea condition** is likely from 4<sup>th</sup> December evening till 6<sup>th</sup> December morning.

**(iv) Fishermen Warning (graphics attached):**

Fishermen are advised not to venture into:

- Southwest Bay of Bengal and along & off North Tamil Nadu-Puducherry Coasts till 5<sup>th</sup> December.
- Westcentral Bay of Bengal and along & off Andhra Pradesh Coast till 6<sup>th</sup> December.
- Along & off Odisha coast from 4<sup>th</sup> December evening till 6<sup>th</sup> December
- 

**(v) Storm Surge (Graphics enclosed):**

Storm surge of about 1-1.5 meter above astronomical tide likely to inundate south Coastal Andhra Pradesh districts at the time of landfall.

**(vi) Damage Expected over coastal districts of South Andhra Pradesh (Nellore, Tirupati Prakasam, Bapatla, Guntur, Krishna and West Godavari) and adjoining coastal districts of North Tamil Nadu-Puducherry:**

- Major damage to thatched houses/ huts. Roof tops may blow off. Unattached metal sheets may fly.
- Possibilities of damage to vulnerable structure.
- Breaking of tree branches, uprooting of large avenue trees. Major damage to banana and papaya trees. Large dead limbs blown from trees.
- Minor damage to power and communication lines due to breaking of branches and uprooting of trees.
- Major damage to Kutcha and minor damage to Pucca roads due to heavy rain.
- Damage to paddy crops, horticultural crops and orchards.
- Sea water inundation in low lying areas after erosion of Kutcha embankments
- Inundation of low lying areas in coastal districts due to heavy rainfall and flash flood

---

Contact: Cyclone Warning Division, Office of the Director General of Meteorology,  
India Meteorological Department, Ministry of Earth Sciences.

Phone:(91) 11-24652484, FAX: (91) 11-24643128, 24623220, E-mail:cwdhq2008@gmail.com, Website:

[rsmcnewdelhi.imd.gov.in](http://rsmcnewdelhi.imd.gov.in)

Spatial rainfall distribution: Isolated: <25%, A few: 26-50%, Many: 51-75%, Most: 76-100%

Rainfall amount (mm): Heavy rain: 64.5 – 115.5, Very heavy rain: 115.6 – 204.4, Extremely heavy rain: 204.5 or more.

- Localized Flooding of roads and closure of underpasses mainly in urban areas of the above region.
- Occasional reduction in visibility due to heavy rainfall.
- Disruption of traffic due to water logging and squally winds
- Localized Landslides/Mudslides
- It may lead to riverine flooding in some river catchments (for riverine flooding please visit Web page of CWC)

**(vi) Action Suggested for coastal districts of South Andhra Pradesh and adjoining coastal districts of North Tamil Nadu-Puducherry:**

- Total suspension of fishing operations.
- Surface transport and shipping operations need to be regulated
- Onshore & Offshore operation need to be regulated as per guidelines
- Coastal hutment dwellers to be in safer places.
- People in affected areas to remain indoors.
- Avoid going to areas that face the water logging problems often.
- Avoid staying in vulnerable structure.

**The system is under continuous surveillance and the next Press Release will be issued at 1430 hours IST of 4<sup>th</sup> December, 2023.**

**For regular updates kindly visit [www.rsmcnewdelhi.imd.gov.in](http://www.rsmcnewdelhi.imd.gov.in) and [www.mausam.imd.gov.in](http://www.mausam.imd.gov.in)**

---

Contact: Cyclone Warning Division, Office of the Director General of Meteorology,  
India Meteorological Department, Ministry of Earth Sciences.

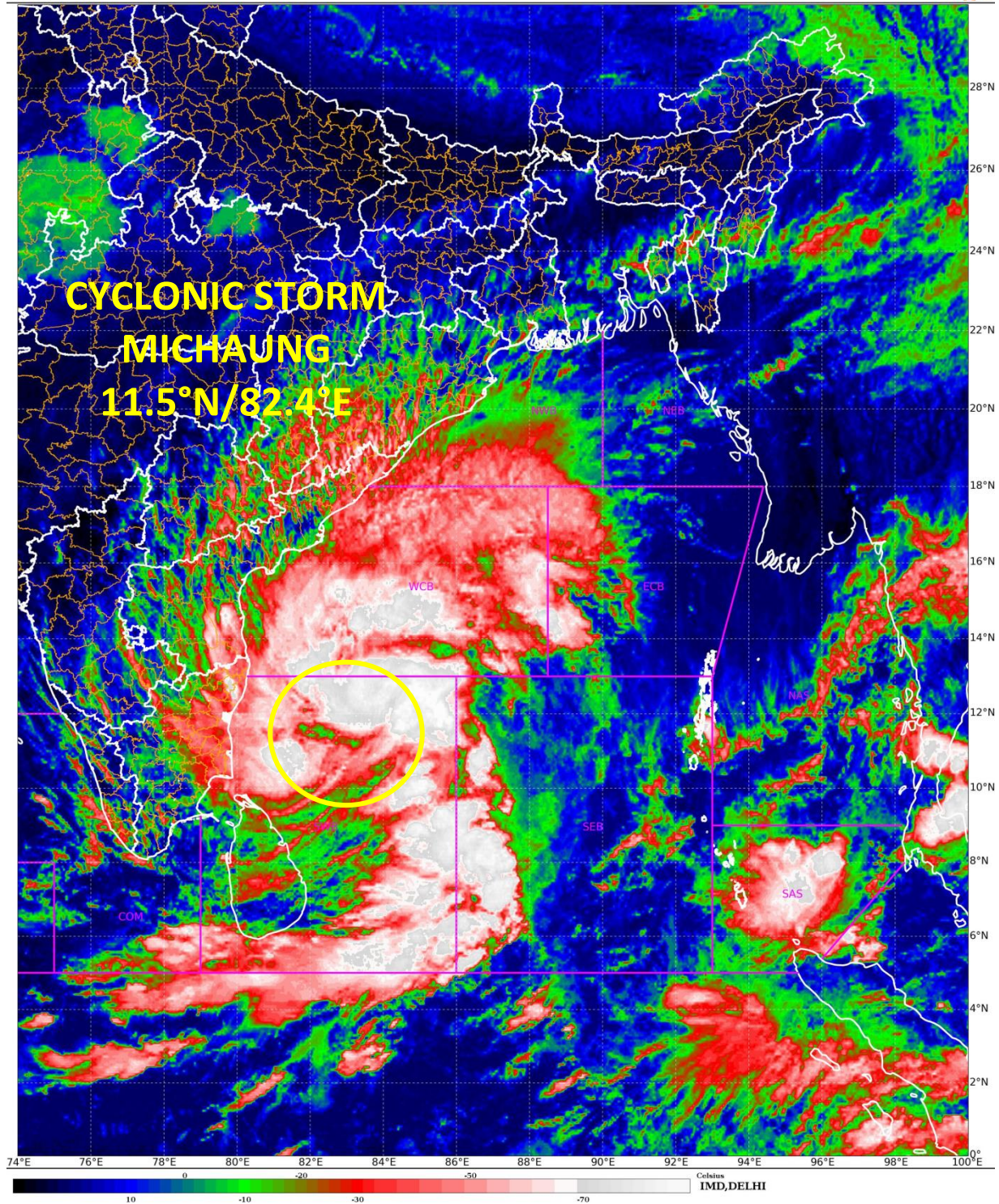
Phone:(91) 11-24652484, FAX: (91) 11-24643128, 24623220, E-mail:cwdhq2008@gmail.com, Website:  
[rsmcnewdelhi.imd.gov.in](http://rsmcnewdelhi.imd.gov.in)

Spatial rainfall distribution: Isolated: <25%, A few: 26-50%, Many: 51-75%, Most: 76-100%

Rainfall amount (mm): Heavy rain: 64.5 – 115.5, Very heavy rain: 115.6 – 204.4, Extremely heavy rain: 204.5 or more.

SAT : INSAT-3D IMG  
IMG\_TIR1\_TEMP 10.8 um  
LIC Mercator

03-12-2023/(0500 to 0527) GMT  
03-12-2023/(1030 to 1057) IST



Contact: Cyclone Warning Division, Office of the Director General of Meteorology,  
India Meteorological Department, Ministry of Earth Sciences.

Phone:(91) 11-24652484, FAX: (91) 11-24643128, 24623220, E-mail:cwdhq2008@gmail.com, Website:  
[rsmcnewdelhi.imd.gov.in](http://rsmcnewdelhi.imd.gov.in)

Spatial rainfall distribution: Isolated: <25%, A few: 26-50%, Many: 51-75%, Most: 76-100%

Rainfall amount (mm): Heavy rain: 64.5 – 115.5, Very heavy rain: 115.6 – 204.4, Extremely heavy rain: 204.5 or more.



**OBSERVED AND FORECAST TRACK ALONGWITH CONE OF UNCERTAINTY IN ASSOCIATION WITH CYCLONIC STORM "MICHAUNG" OVER SOUTHWEST BAY OF BENGAL BASED ON 0300 UTC (0830 IST) OF 03<sup>RD</sup> DECEMBER 2023.**



DATE/TIME IN UTC  
 IST=UTC + 0530  
 L: LOW PRESSURE AREA  
 WML: WELL MARKED LOW PRESSURE AREA  
 D: DEPRESSION (17-27 KT)  
 DD: DEEP DEPRESSION (28-33 KT)  
 CS: CYCLONIC STORM (34-47 KT)  
 SCS: SEVERE CYCLONIC STORM (48-63KT)  
 VSCS: VERY SEVERE CYCLONIC STORM (64-89 KT)  
 ESCS: EXTREMELY SEVERE CYCLONIC STORM (90-119 KT)  
 SuCS: SUPER CYCLONIC STORM (≥ 120 KT)

● LESS THAN 34 KT  
 ⚡ 34-47 KT  
 ⚡ ≥ 48 KT  
 — OBSERVED TRACK  
 — FORECAST TRACK  
 ▲ CONE OF UNCERTAINTY

Forecast Date and Time (UTC)	DISTANCE (KM) AND DIRECTION FROM STATIONS				
	MO PONDICHERRY	CHENNAI/MINAMBAKKAM	NELLORE	BAPATLA	MACHILIPATNAM/ FRANCHPET
03.12.23/0300	280, E	290, SE	420, SE	530, SSE	540, SSE
04.12.23/0000	190, NE	90, E	180, SE	310, S	340, S
05.12.23/0000	380, N	260, N	110, NNE	70, SSW	130, SW
06.12.23/0000	620, NNE	500, NNE	360, NNE	200, NE	130, NNE

Contact: Cyclone Warning Division, Office of the Director General of Meteorology, India Meteorological Department, Ministry of Earth Sciences.

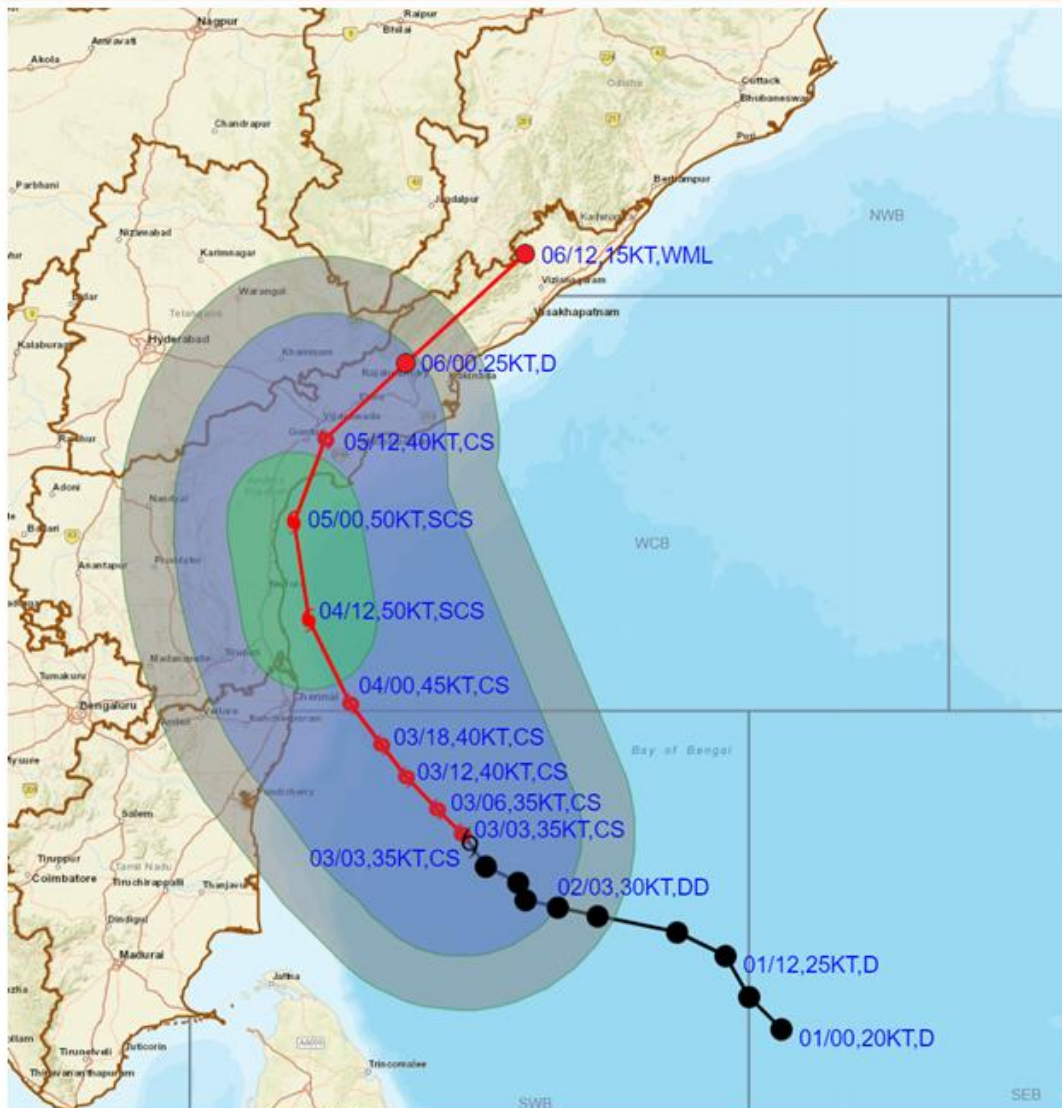
Phone:(91) 11-24652484, FAX: (91) 11-24643128, 24623220, E-mail:cwdhq2008@gmail.com, Website: [rsmcnewdelhi.imd.gov.in](http://rsmcnewdelhi.imd.gov.in)

Spatial rainfall distribution: Isolated: <25%, A few: 26-50%, Many: 51-75%, Most: 76-100%

Rainfall amount (mm): Heavy rain: 64.5 – 115.5, Very heavy rain: 115.6 – 204.4, Extremely heavy rain: 204.5 or more.



**OBSERVED & FORECAST TRACK, MAXIMUM SUSTAINED WIND AND QUADRANT WIND IN ASSOCIATION WITH CYCLONIC STORM "MICHAUNG" OVER SOUTHWEST BAY OF BENGAL BASED ON 0300 UTC (0830 IST) OF 03<sup>RD</sup> DECEMBER 2023.**



DATE/TIME IN UTC  
IST=UTC + 0530

L: LOW PRESSURE AREA  
WML: WELL MARKED LOW PRESSURE AREA  
D: DEPRESSION (17-27 KT)  
DD: DEEP DEPRESSION (28-33 KT)  
CS: CYCLONIC STORM (34-47 KT)  
SCS: SEVERE CYCLONIC STORM (48-63KT)  
VSCS: VERY SEVERE CYCLONIC STORM (64-89 KT)  
ESCS: EXTREMELY SEVERE CYCLONIC STORM (90-119 KT)  
SuCS: SUPER CYCLONIC STORM (≥ 120 KT)

● LESS THAN 34 KT  
○ 34.47 KT  
⦿ ≥ 48 KT  
— OBSERVED TRACK  
— FORECAST TRACK  
— CONE OF UNCERTAINTY  
AREA OF MAXIMUM SUSTAINED WIND SPEED:  
■ 28-33 KT (52-61 KMPH)  
■ 34-49 KT (62-91 KMPH)  
■ 50-63 KT (92-117 KMPH)  
■ ≥ 64 KT (≥118 KMPH)

**IMPACT OVER THE SEA**

MSW (knot/kmph)	Impact	Action
28-33 (52-61)	Very rough seas	Total suspension of fishing operations
34-49 (62-91)	High to very high seas	Total suspension of fishing operations
50-63 (92-117)	Very high seas	Total suspension of fishing operations
≥ 64 (≥118)	Phenomenal	Total suspension of fishing operations

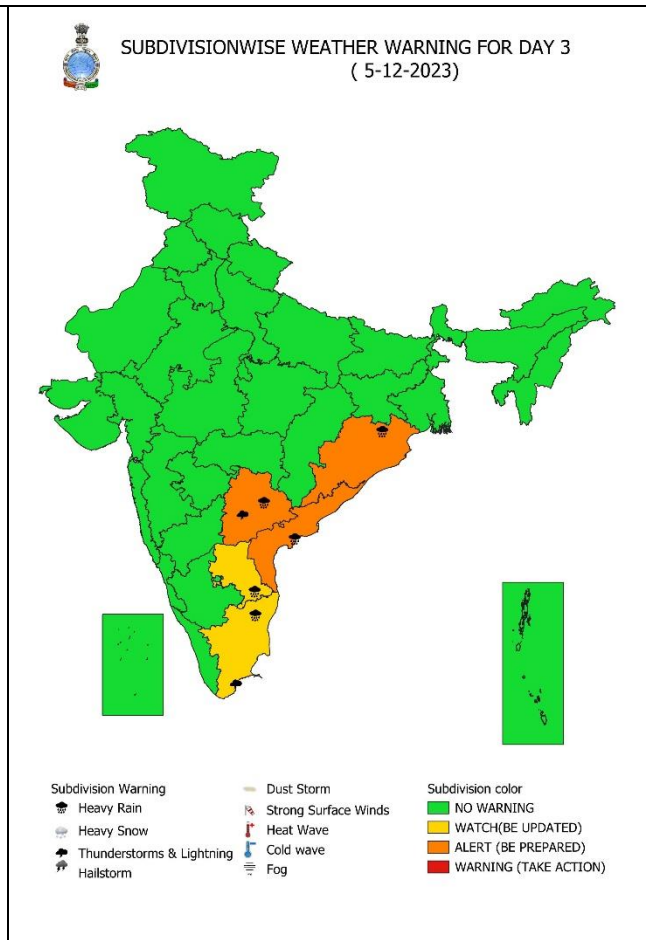
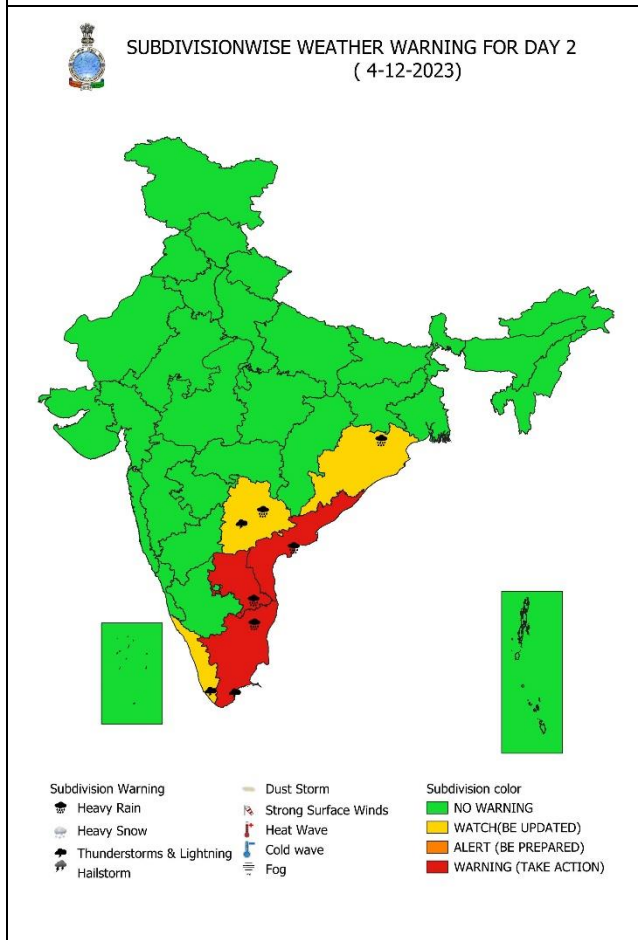
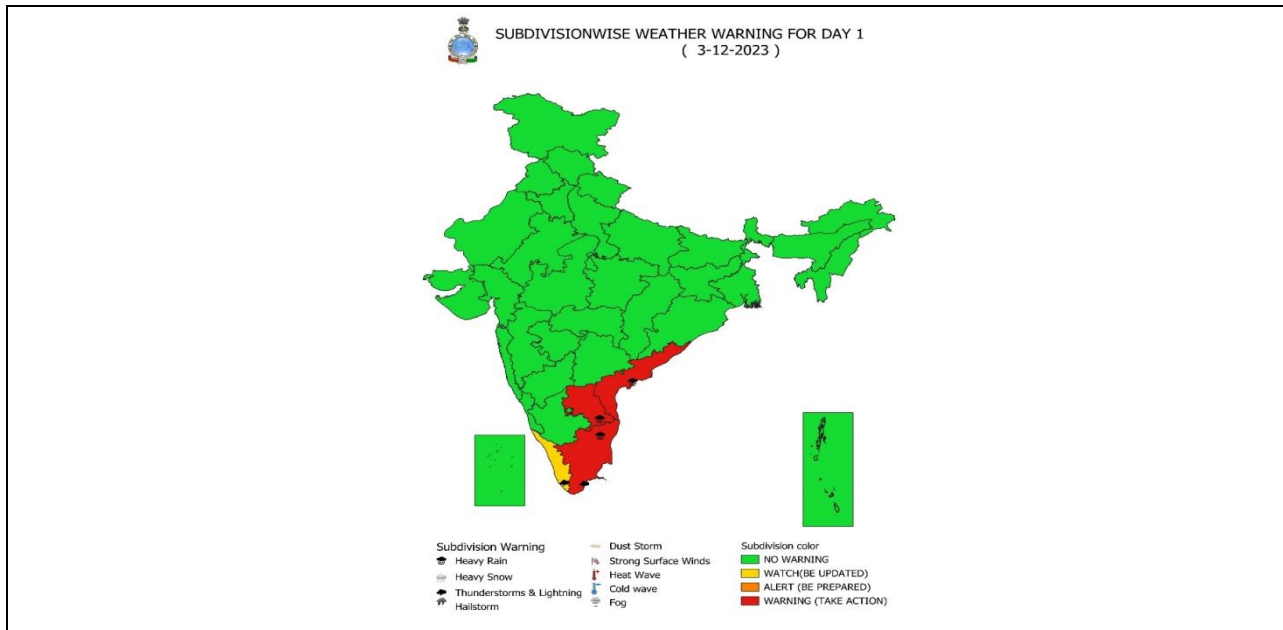
Contact: Cyclone Warning Division, Office of the Director General of Meteorology,  
India Meteorological Department, Ministry of Earth Sciences.

Phone:(91) 11-24652484, FAX: (91) 11-24643128, 24623220, E-mail:cwdhq2008@gmail.com, Website:  
[rsmcnewdelhi.imd.gov.in](http://rsmcnewdelhi.imd.gov.in)

Spatial rainfall distribution: Isolated: <25%, A few: 26-50%, Many: 51-75%, Most: 76-100%

Rainfall amount (mm): Heavy rain: 64.5 – 115.5, Very heavy rain: 115.6 – 204.4, Extremely heavy rain: 204.5 or more.

# Weather Warning Graphics



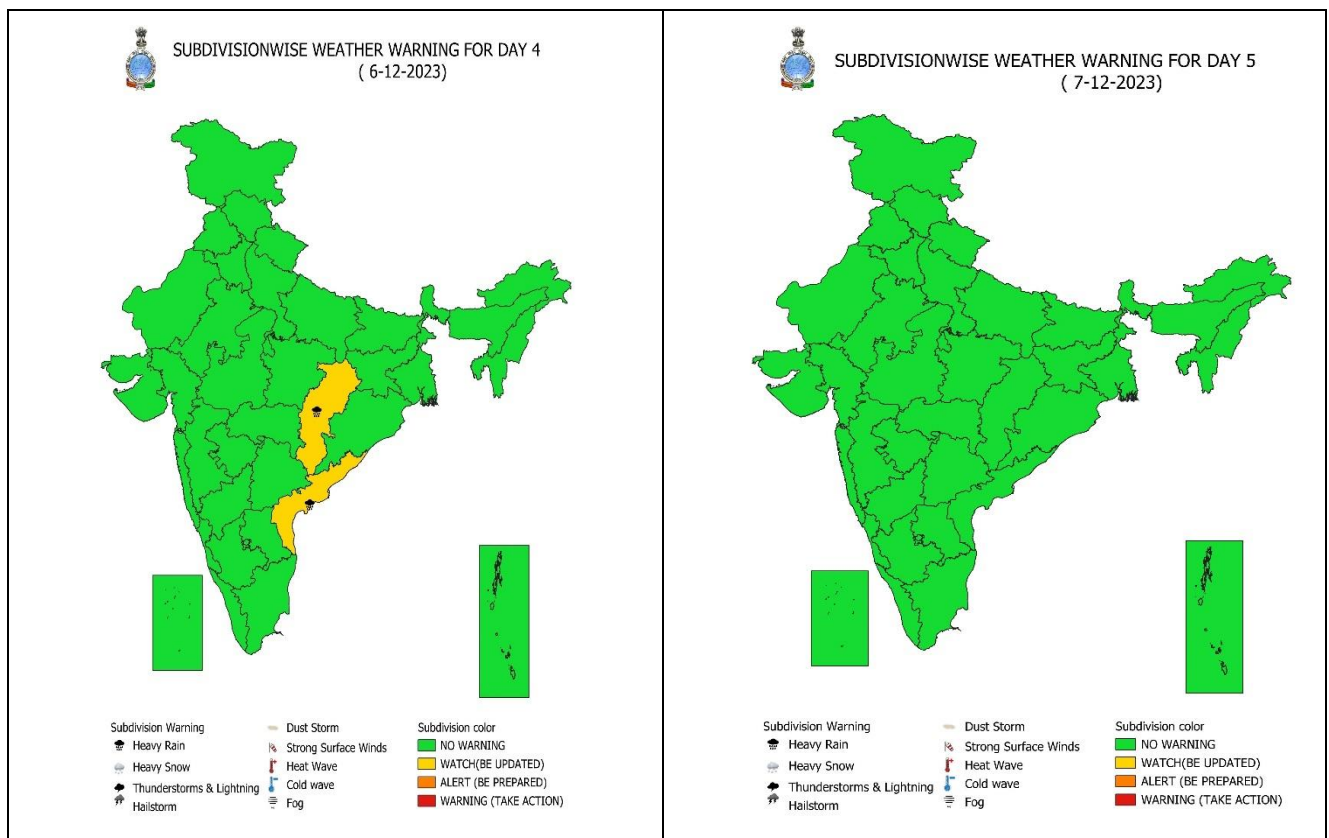
**Contact: Cyclone Warning Division, Office of the Director General of Meteorology, India Meteorological Department, Ministry of Earth Sciences.**

**Phone:(91) 11-24652484, FAX: (91) 11-24643128, 24623220, E-mail:cwdhq2008@gmail.com, Website: [rsmcnewdelhi.imd.gov.in](http://rsmcnewdelhi.imd.gov.in)**

**Spatial rainfall distribution: Isolated: <25%, A few: 26-50%, Many: 51-75%, Most: 76-100%**

**Rainfall amount (mm): Heavy rain: 64.5 – 115.5, Very heavy rain: 115.6 – 204.4, Extremely heavy rain: 204.5 or more.**





<p><b>WARNING</b></p> <p><b>WARNING (TAKE ACTION)</b></p> <p><b>ALERT ( BE PREPARED)</b></p> <p><b>WATCH (BE UPDATED)</b></p> <p><b>NO WARNING ( NO ACTION)</b></p>	Heavy Rain	Heavy Snow	Thunderstorm	Dust Storm
	Strong Winds	Visibility	Cyclone	Squall/ Hail
	Frost	Cold Wave	Heat Wave	Sea State

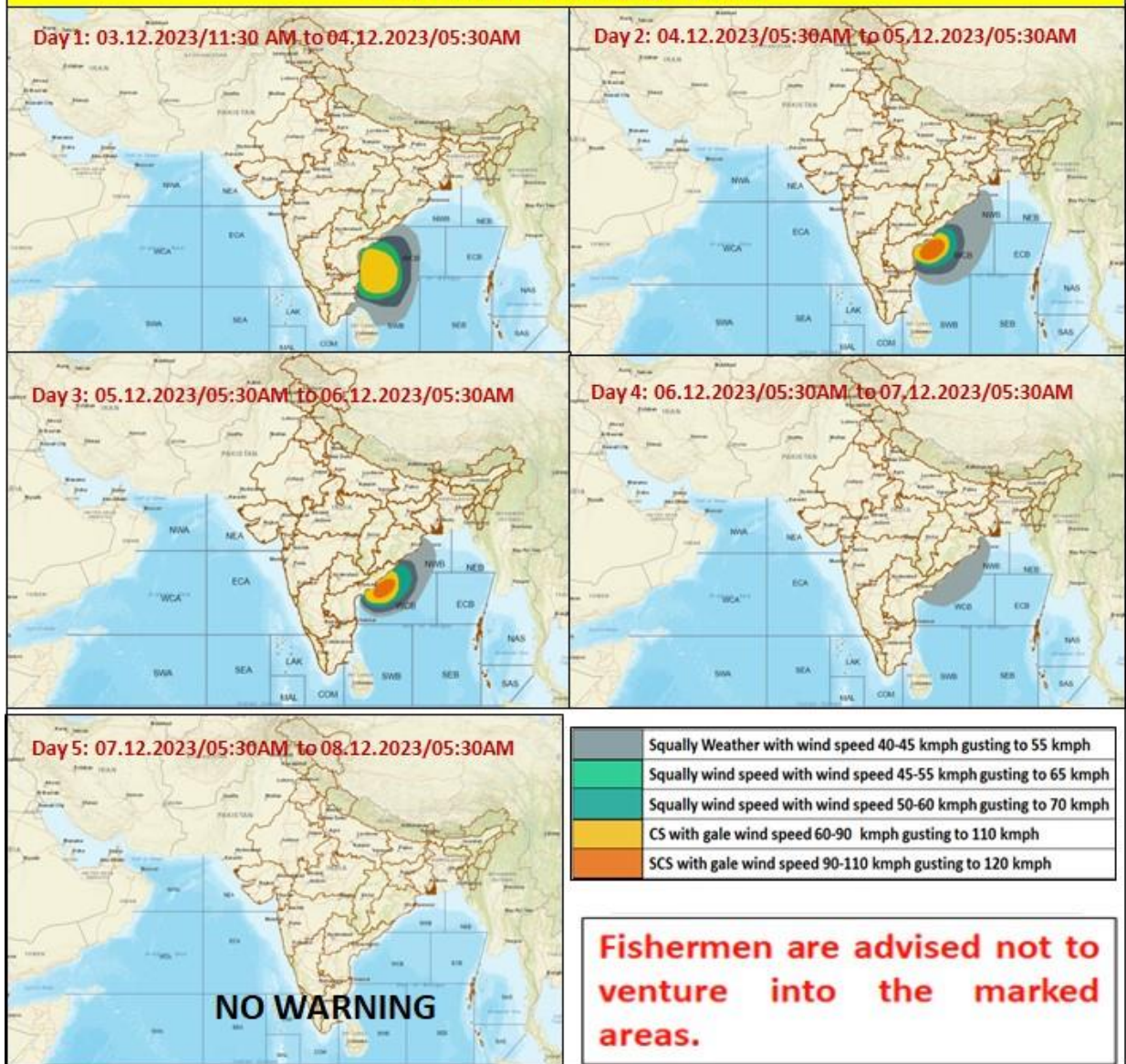
Contact: Cyclone Warning Division, Office of the Director General of Meteorology,  
India Meteorological Department, Ministry of Earth Sciences.

Phone:(91) 11-24652484, FAX: (91) 11-24643128, 24623220, E-mail:cwdhq2008@gmail.com, Website:  
[rsmcnewdelhi.imd.gov.in](http://rsmcnewdelhi.imd.gov.in)

Spatial rainfall distribution: Isolated: <25%, A few: 26-50%, Many: 51-75%, Most: 76-100%

Rainfall amount (mm): Heavy rain: 64.5 – 115.5, Very heavy rain: 115.6 – 204.4, Extremely heavy rain: 204.5 or more.

## Fishermen warning graphics



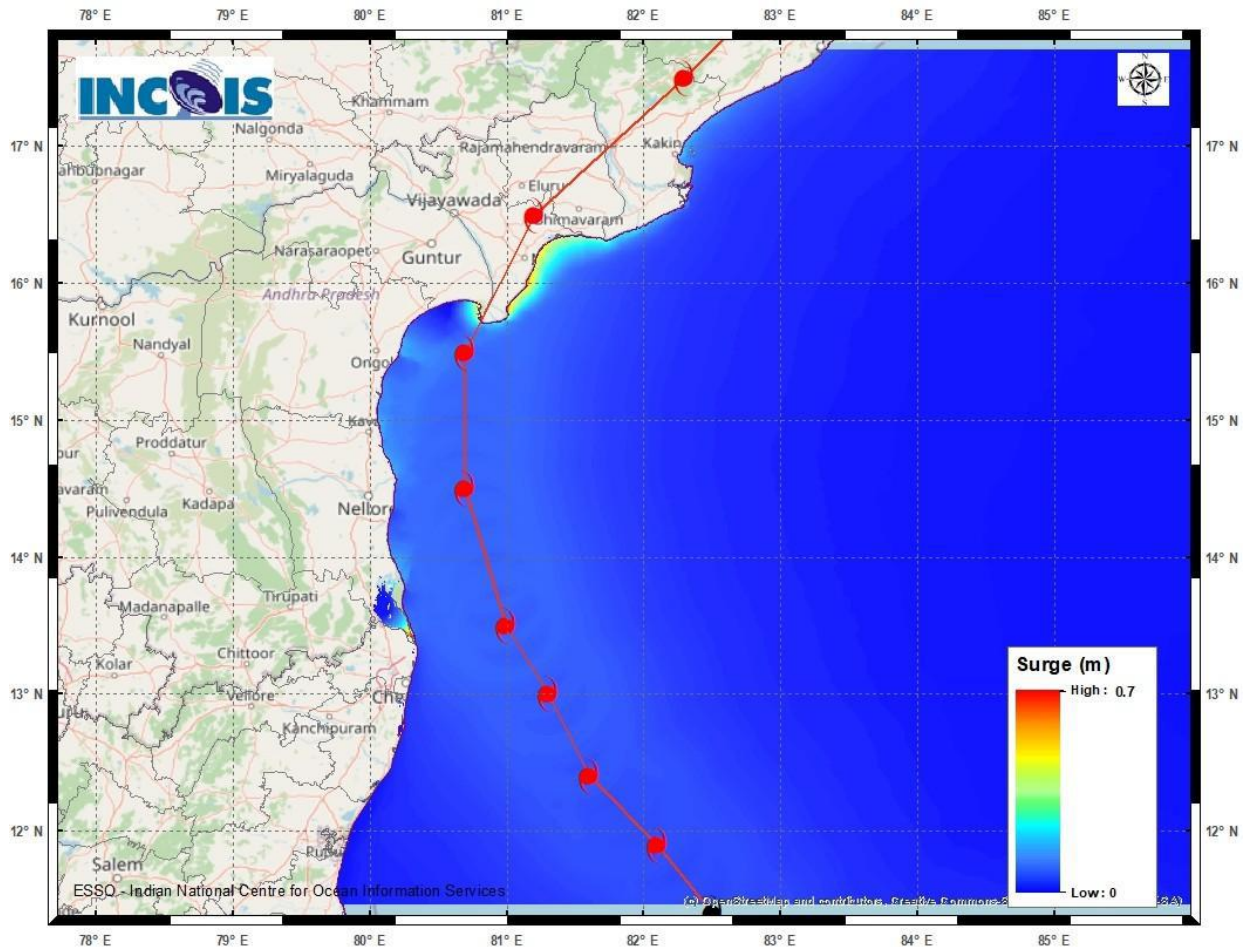
Contact: Cyclone Warning Division, Office of the Director General of Meteorology,  
India Meteorological Department, Ministry of Earth Sciences.

Phone:(91) 11-24652484, FAX: (91) 11-24643128, 24623220, E-mail:cwdhq2008@gmail.com, Website:  
[rsmcnewdelhi.imd.gov.in](http://rsmcnewdelhi.imd.gov.in)

Spatial rainfall distribution: Isolated: <25%, A few: 26-50%, Many: 51-75%, Most: 76-100%

Rainfall amount (mm): Heavy rain: 64.5 – 115.5, Very heavy rain: 115.6 – 204.4, Extremely heavy rain: 204.5 or more.

### Storm Surge Warning Graphics based on Forecast Track



#### STORM SURGE HEIGHT INFORMATION:

\* The below listed surge heights are over and above astronomical tide.

MANDAL/TALUK	DISTRICT	STATE/UNION TERRITORY	NEAREST PLACE OF HABITATION	STORM SURGE (m)	EXPECTED INUNDATION EXTENT (km)
Avanigadda	Krishna	Andhra Pradesh	Ramakrishnapuram	0.2-0.7	Upto 0.16
Machilipatnam	Krishna	Andhra Pradesh	Perupalem	0.3-0.7	Upto 0.17
Ponneri	Thiruvallur	Tamil Nadu	Karimanal	0.2-0.6	Upto 0.15
Repalle	Guntur	Andhra Pradesh	Repalle	0.3-0.5	Upto 0.25

Contact: Cyclone Warning Division, Office of the Director General of Meteorology,  
India Meteorological Department, Ministry of Earth Sciences.

Phone:(91) 11-24652484, FAX: (91) 11-24643128, 24623220, E-mail:cwdhq2008@gmail.com, Website:  
[rsmcnewdelhi.imd.gov.in](http://rsmcnewdelhi.imd.gov.in)

Spatial rainfall distribution: Isolated: <25%, A few: 26-50%, Many: 51-75%, Most: 76-100%

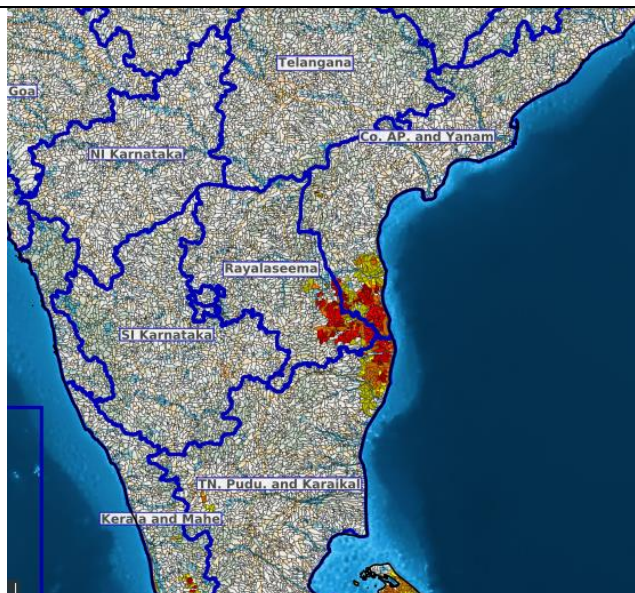
Rainfall amount (mm): Heavy rain: 64.5 – 115.5, Very heavy rain: 115.6 – 204.4, Extremely heavy rain: 204.5 or more.

## Flash Flood Guidance

**Flash Flood Risk (FFR) till 0530**

**IST of 04-12-2023 :**

Moderate Flash flood risk likely in next 24 hours over Southern part of Coastal Andhra Pradesh and Yanam and adjoining area of South-East part of Rayalaseema and Northern part Tamil Nadu – Puducherry.



Contact: Cyclone Warning Division, Office of the Director General of Meteorology,  
India Meteorological Department, Ministry of Earth Sciences.

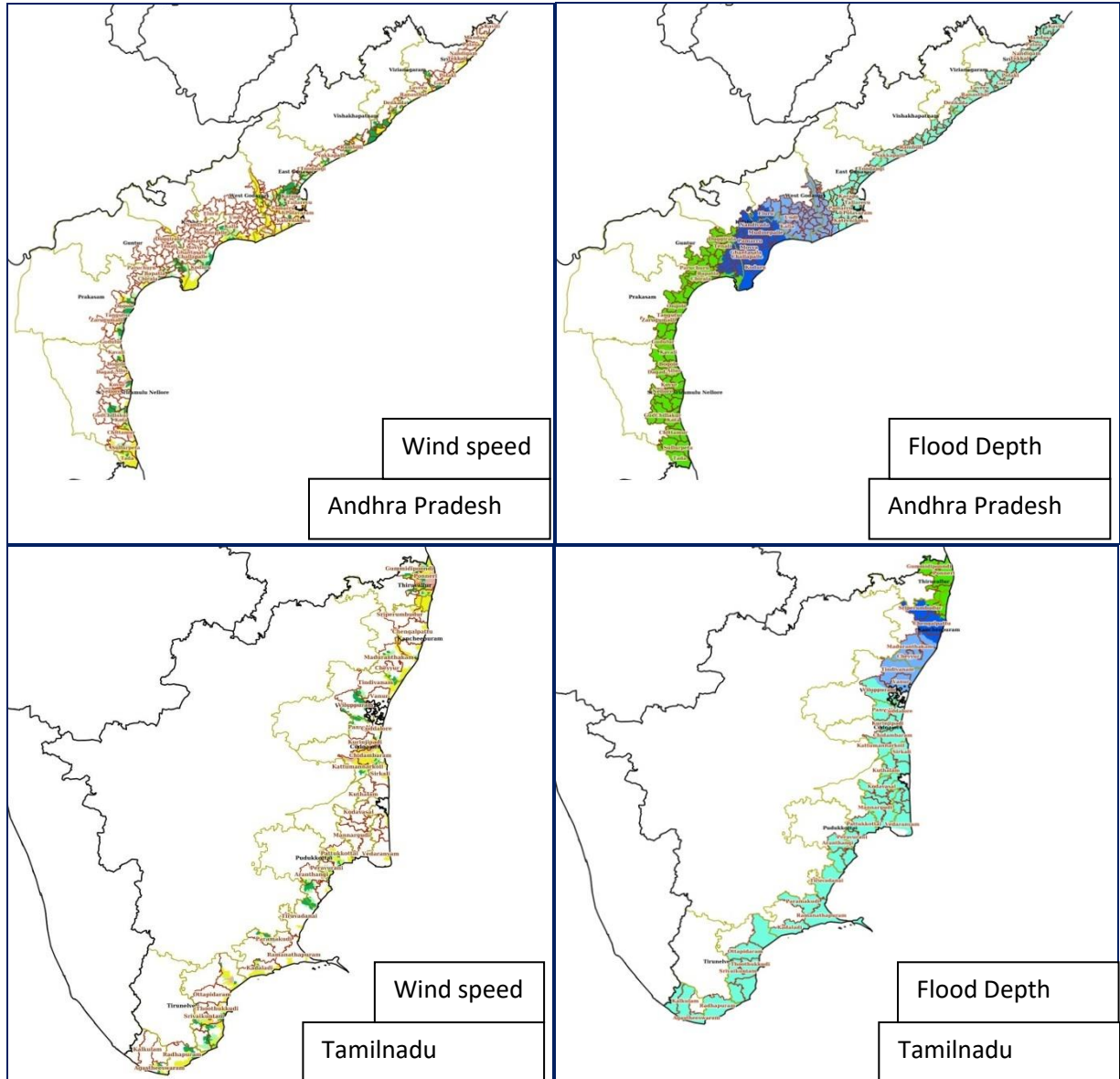
Phone:(91) 11-24652484, FAX: (91) 11-24643128, 24623220, E-mail:cwdhq2008@gmail.com, Website:

[rsmcnewdelhi.imd.gov.in](http://rsmcnewdelhi.imd.gov.in)

Spatial rainfall distribution: Isolated: <25%, A few: 26-50%, Many: 51-75%, Most: 76-100%

Rainfall amount (mm): Heavy rain: 64.5 – 115.5, Very heavy rain: 115.6 – 204.4, Extremely heavy rain: 204.5 or more.

## Hazard Map with Cyclonic Storm MICHAUNG over Southwest Bay of Bengal















Contact: Cyclone Warning Division, Office of the Director General of Meteorology,  
India Meteorological Department, Ministry of Earth Sciences.








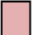


Phone:(91) 11-24652484, FAX: (91) 11-24643128, 24623220, E-mail:cwdhq2008@gmail.com, Website:

[rsmcnewdelhi.imd.gov.in](http://rsmcnewdelhi.imd.gov.in)

Spatial rainfall distribution: Isolated: <25%, A few: 26-50%, Many: 51-75%, Most: 76-100%

Rainfall amount (mm): Heavy rain: 64.5 – 115.5, Very heavy rain: 115.6 – 204.4, Extremely heavy rain: 204.5 or more.

L E G E N D	 State Boundary	 District Boundary	 Tehsil Boundary	 Village Boundary
	 Wind Speed (Less than 31 Km/h)	 Wind Speed (31 - 49 Km/h)	 Wind Speed (49 - 61 Km/h)	
	 Wind Speed (61 - 88 Km/h)	 Wind Speed (88 - 117 Km/h)	 Wind Speed (117- 166 Km/h)	
	 Wind Speed (166 - 221 Km/h)	 Wind Speed (Greater than 221 Km/h)		<b>WIND SPEED</b>

L E G E N D	 State Boundary	 District Boundary	 Tehsil Boundary	 Village Boundary
	 Very Low (Less than 0.25 m)	 Low (0.25 to 0.50 m)	 Moderate (0.50 to 1.0 m)	
	 High (1.0 to 2.0 m)	 Very High (2.0 to 3.0 m)	 Extreme (Greater than 3.0 m)	
				<b>FLOOD DEPTH</b>

Contact: Cyclone Warning Division, Office of the Director General of Meteorology,  
India Meteorological Department, Ministry of Earth Sciences.

Phone:(91) 11-24652484, FAX: (91) 11-24643128, 24623220, E-mail:cwdhq2008@gmail.com, Website:  
[rsmcnewdelhi.imd.gov.in](http://rsmcnewdelhi.imd.gov.in)

Spatial rainfall distribution: Isolated: <25%, A few: 26-50%, Many: 51-75%, Most: 76-100%

Rainfall amount (mm): Heavy rain: 64.5 – 115.5, Very heavy rain: 115.6 – 204.4, Extremely heavy rain: 204.5 or more.